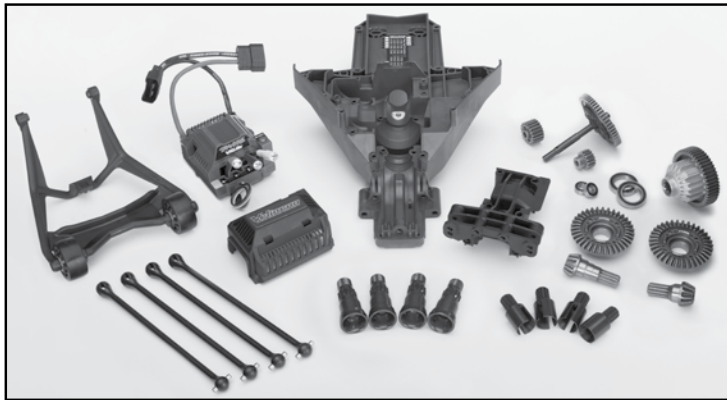




## Power-UP™ 8S Upgrade Kit Installation Instructions

Covers Part #7795



### Kit Contents:

- VXL-8s Electronic Speed Control
- Motor Cooling Fan Assembly
- Cush Drive Assembly
- Torque-Biasing Center Drive
- Metal Driveshaft Assembly (4)
- Lower Rear Bulkhead
- Upper Rear Bulkhead
- Wheelie Bar
- Transmission Input Gear
- Driveshaft Cross Pin (4)
- Stub Axle (4)
- Drive Cup (4)
- Battery Spacers
- 15-Tooth Motor Pinion Gear
- 18-Tooth Motor Pinion Gear
- Differential Ring Gear (2)
- Front Differential Pinion Gear
- Rear Differential Pinion Gear
- High Performance Grease
- 3.5x19.8mm Pin (4)
- 17x26x5mm Ball Bearing (2)
- 4x15mm Button-Head Cap Screw (BCS) (8)
- 3x10mm Cap Screw (CS) (4)
- 3.5x16mm Cap Screw (CS) (4)
- 4x4mm Set Screw (GS) (threadlocked) (2)

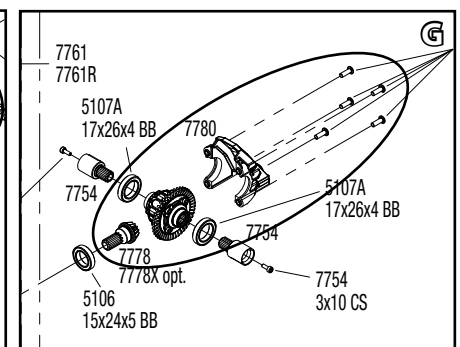
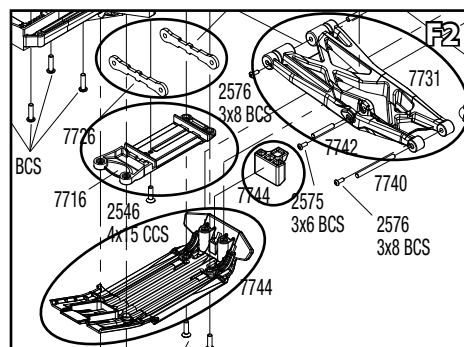
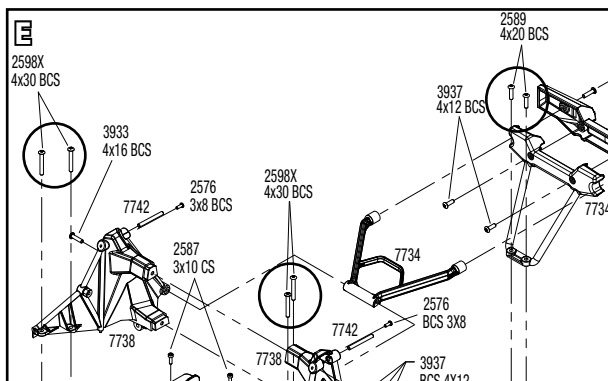
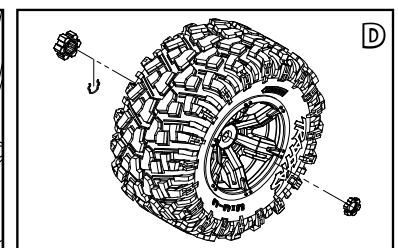
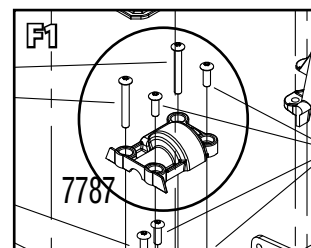
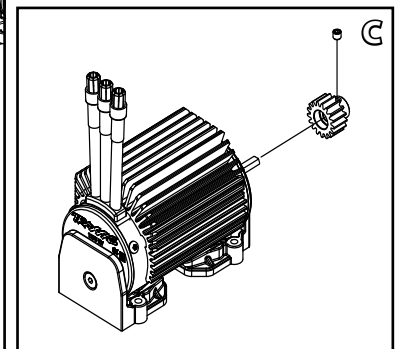
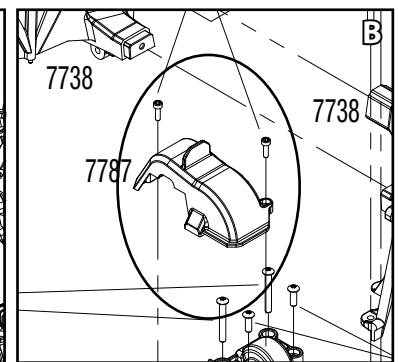
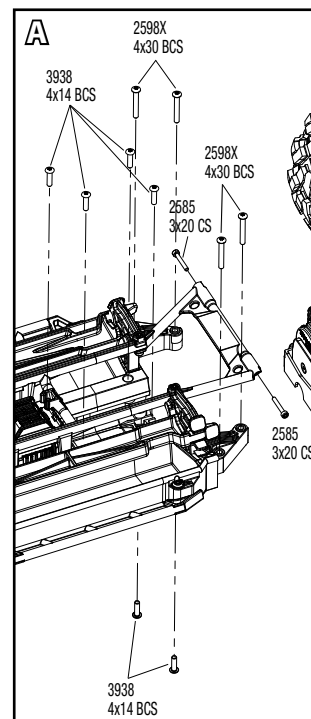
### Tools Needed:

- 2.5mm hex wrench
- 2.0mm hex wrench
- 17mm wheel nut wrench
- Side cutters

For additional information and how-to videos, visit [Traxxas.com/support](http://Traxxas.com/support).

### Rear Assembly Upgrade

1. Remove the 4x14 BCS (6), 4x30 BCS (4), and 3x20 CS (2) from the rear bulkhead assembly (A).
2. Remove the two 3x10 CS from the spur gear cover. Remove the cover (B).
3. Remove the motor/motor mount by removing the 4x16 BCS (4). Remove the 4x4 GS from the existing pinion gear and remove the pinion gear from the motor shaft (C).
4. Install one of the new pinion gears on the motor shaft and secure with the 4X4 GS.
  - Install the 15-tooth pinion gear for general off-road play.
  - Install the 18-tooth pinion gear for high speed running on hard smooth surfaces.
5. Gently bend the motor wires and set the motor aside (on top of the electronic speed control).
6. Remove the rear bulkhead assembly.
7. Remove the wheel nuts, wheels, hex clips, and wheel hubs from both sides (D).
8. Remove the 4x30 BCS (4) from the shock tower and the 4x20 BCS (2) from the rear bumper mount (E). Remove both parts from the bulkhead.
9. Remove the rear skid plate, tie bar mount, tie bars, gear covers, and suspension arms from the upper and lower rear bulkhead (F1, F2).
10. Remove the 4x12 BCS (5) from the rear differential cover. Remove the cover and the differential (G).



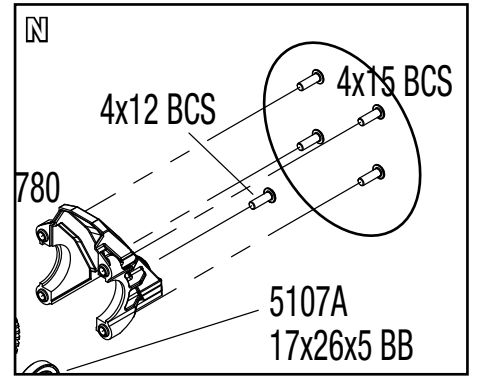
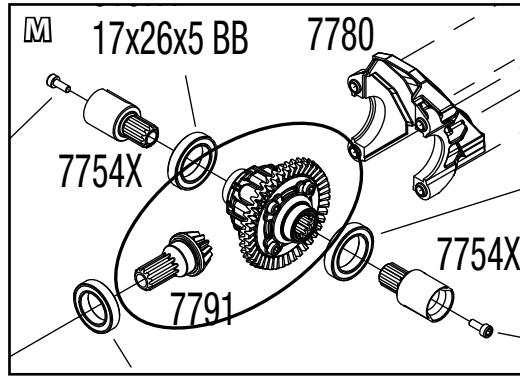
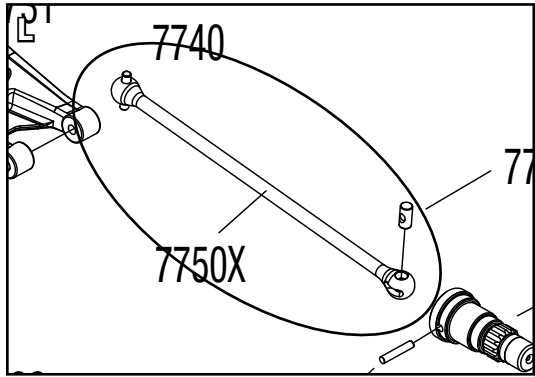
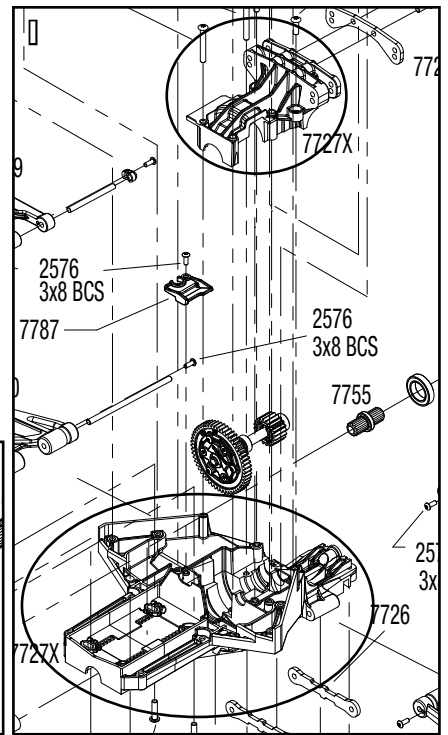
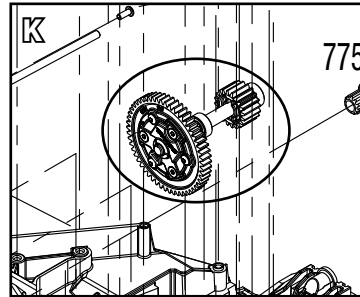
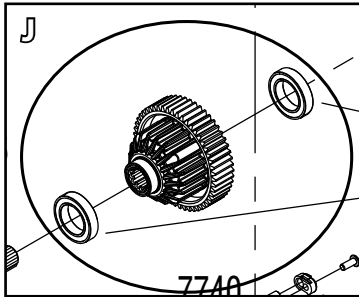
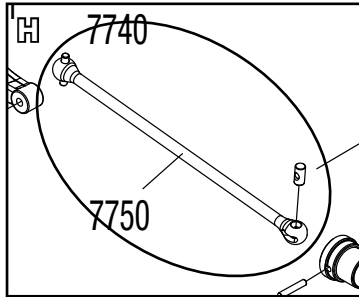
11. Remove the driveshafts (H).

12. Reassemble the rear bulkhead in reverse order with the following new parts:

- Upper and lower rear bulkhead (I)
- Torque-biasing center drive unit with the included 17x26x5mm ball bearings (J)
- Cush drive/spur gear assembly with new 6x13x5mm ball bearings (K)
- Metal driveshaft assemblies (L)
- Rear differential ring and pinion gears with new drive cups (M)
  - Apply a small amount of the supplied grease to the ring gear.
  - Use the included 4x15mm BCS for the four outside screws on the rear differential cover; reuse the center 4x12mm BCS (N).
- Wheelie bar (O)

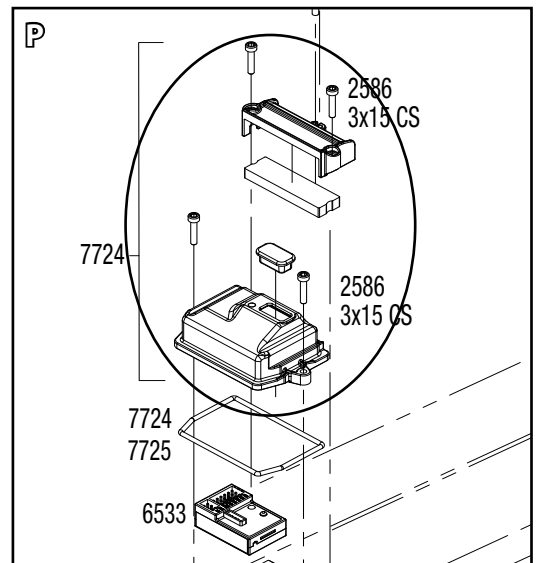
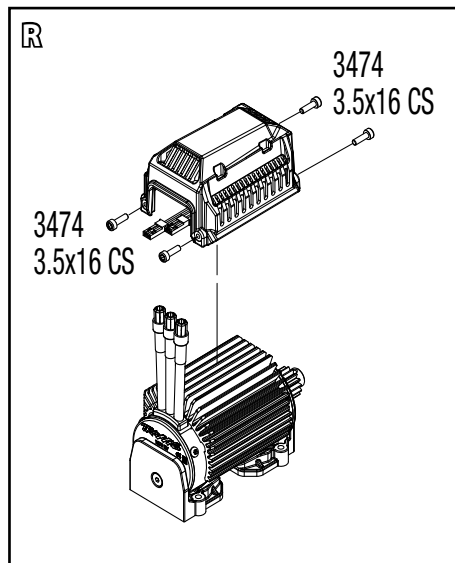
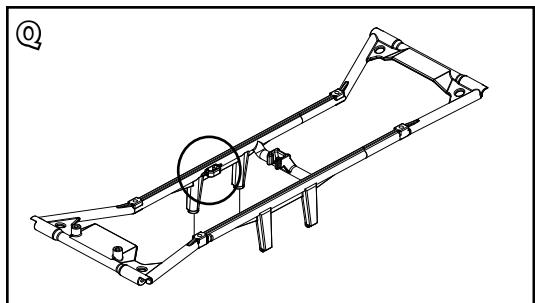
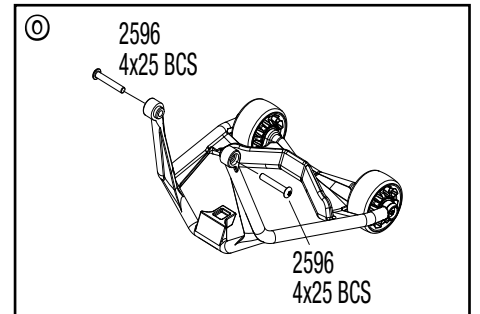
13. Reinstall the rear bulkhead assembly to the chassis.

14. Reinstall the wheel hubs, hex clips, wheels, and wheel nuts to both sides.



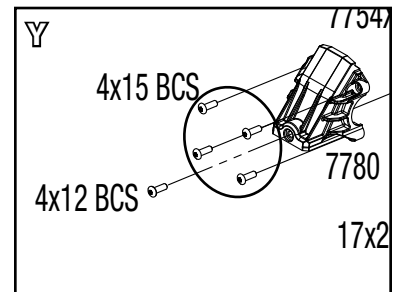
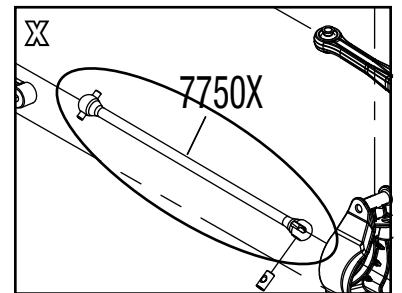
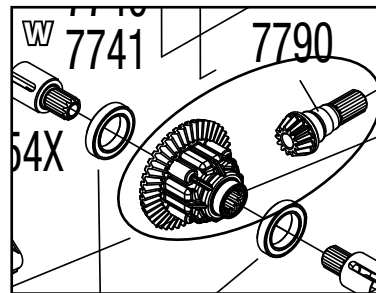
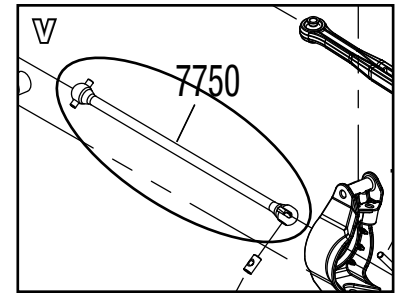
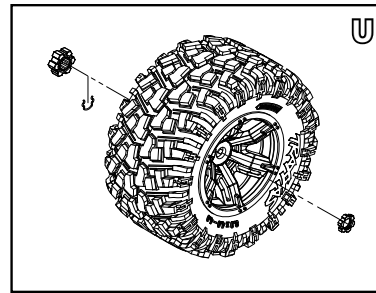
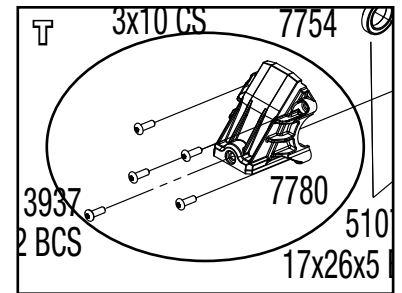
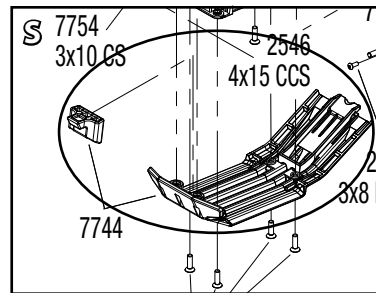
### Electronic Speed Control (ESC) and Motor Upgrade

1. Remove the 3x15 CS (4) from the receiver box cover and wire clamp and then remove the cover and clamp (P).
2. Disconnect the VXL-6s ESC from the receiver. Remove the ESC.
3. Use side cutters to remove the zip tie loop from the chassis brace (Q).
4. Install the new VXL-8s ESC. **Note:** The ESC installs easiest if inserted down at an angle from the front, starting over the top of the receiver box.
5. Install the included cooling fan assembly to the motor heatsink using the supplied 3.5x16mm CS (4) (R). The screws thread directly into the heatsink fins. Make sure that the power wire for the fans is exiting toward the front of the truck.
6. Reinstall the motor/motor mount and 4x16 BCS (4).
7. Plug the wire from the cooling fan assembly in any open channel on the receiver. Be sure to route the power and temperature sensor wires under the center chassis brace support and next to the ESC.
8. Reinstall the receiver box cover, wire clamp, and 3x15 CS (4).



## Front Assembly Upgrade

1. Remove the front and center skid plates (S).
2. Rotate the front bumper up to the front shock tower.
3. Remove the 4x12 BCS (5) from the front differential cover (T). Remove the cover.
4. Remove the differential. **Note:** For easier differential removal, you can remove the lower screw and pin from one of the shocks and move it to the side.
5. Remove the wheel nuts, wheels, hex clips, and wheel hubs from both sides (U).
6. Remove the driveshafts (V).
7. Remove and install the new ring and pinion gears and the differential output gears on the differential (W). Apply grease to ring gear.
8. Assemble and install the new metal driveshafts (X).
9. Reinstall the pin and screw for the shock, if removed.
10. Install the new center differential and differential cover. Use the included 4x15mm BCS for the four outside screws on the front differential cover; reuse the center 4x12mm BCS (Y).
11. Reinstall the front and center skid plates.
12. Reinstall the wheel hubs, hex clips, wheels, and wheel nuts to both sides.

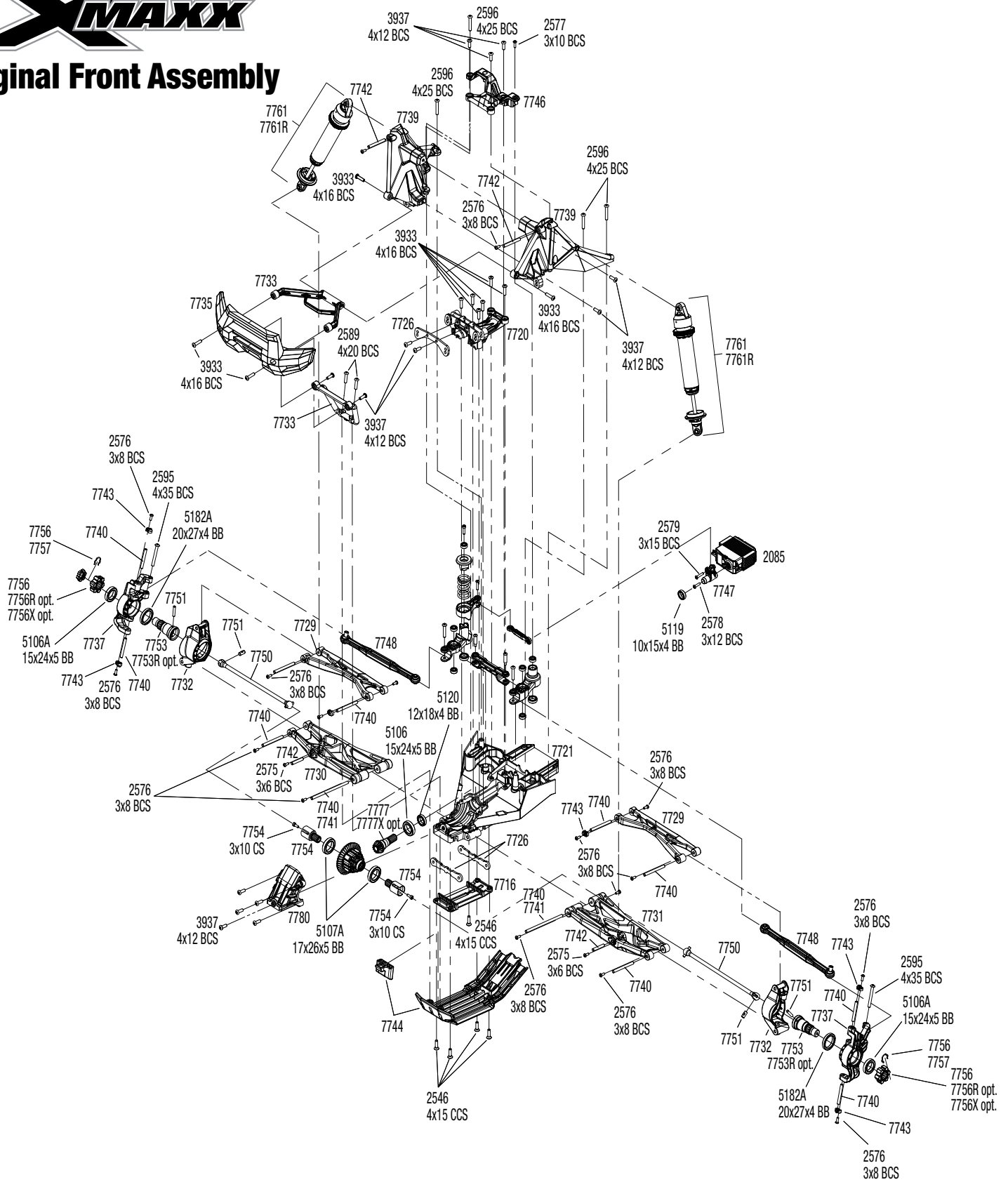






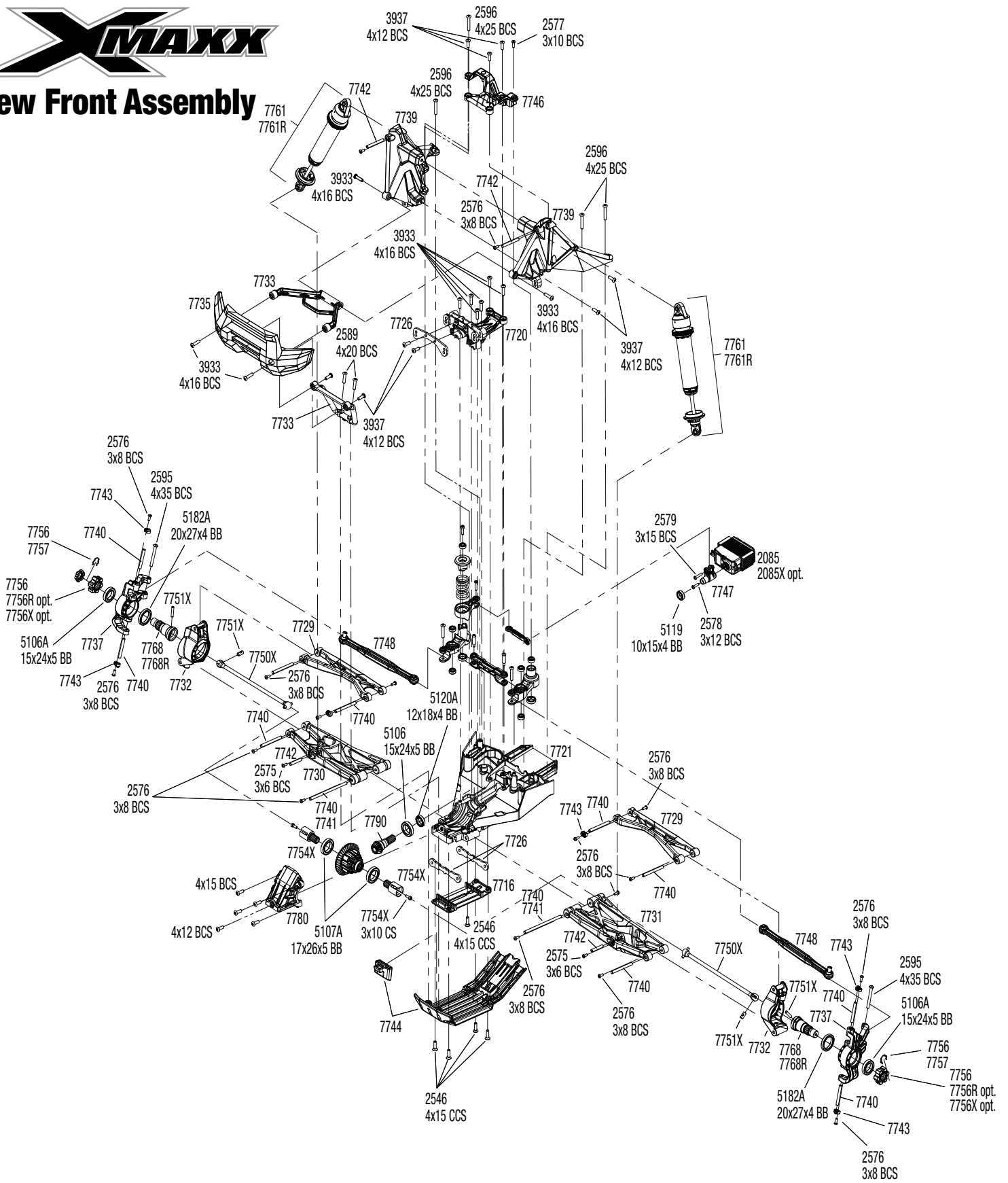


# Original Front Assembly





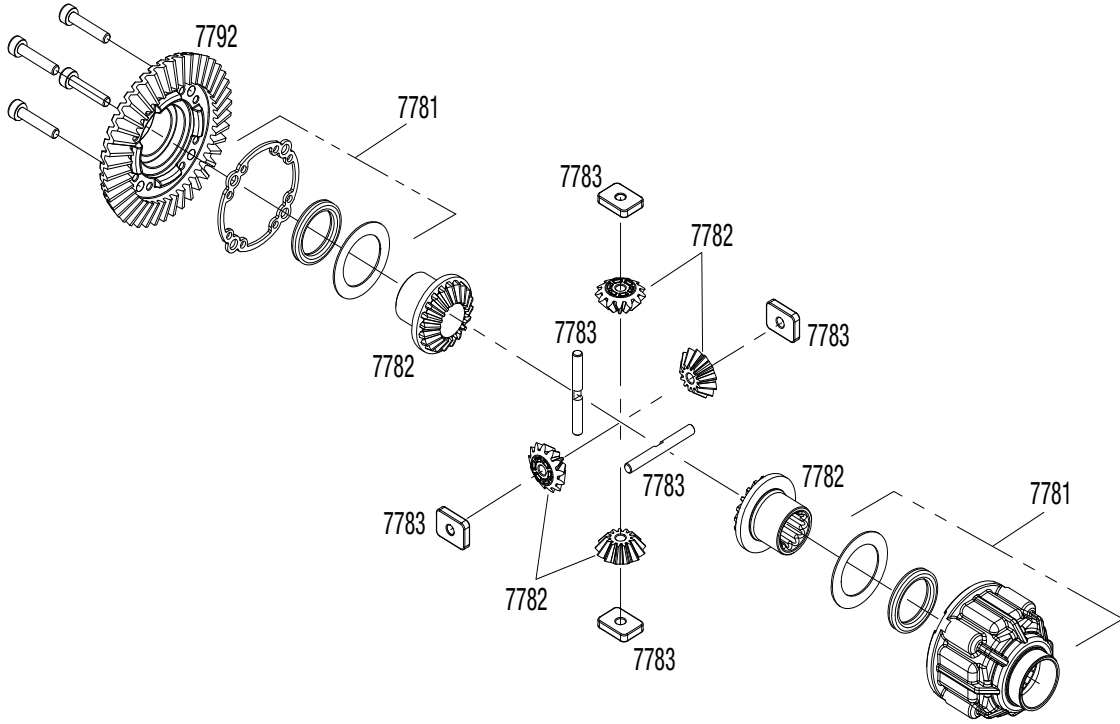
# New Front Assembly





## New Front Differential Assembly

2586  
3x15 CS



## New Rear Differential Assembly

